

PULNiX

PHOTOELECTRIC BEAM

PH-200SE

600' (200 m)

PH-600SE

1,800' (600 m)

LONG RANGE OUTDOOR BEAMS



PH-200BE



PH-600BE

GENERAL DESCRIPTION

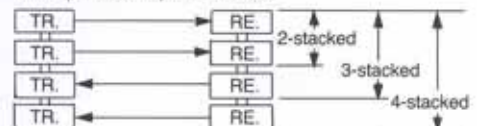
The PULNiX PH-200SE/600SE photoelectric beams have been designed as "intelligent" beams which offer a variety of installation options. They can be operated as single beam units or, with the use of optional modules, can be operated as synchronized twin beams, stacked in sets of four with individual activation or used in continuous line (maximum of four) without negative effects. The units are extraordinarily durable and resistant to various environmental conditions due to innovative circuit design and special protective treatment of all surfaces. They are particularly suitable for heavy duty industrial and large site applications.

FEATURES

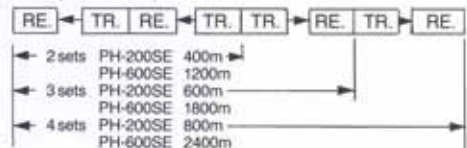
● FLEXIBLE PROTECTION PATTERNS

Synchronized system eliminates unit interference.

*Multi-protection up to 4-stacked



*Line protection up to 4 sets



Note: PH-200SE/600SE mixed protection is possible. As the above application requires some modification and optional parts, do not hesitate to call us for detailed information.

● ANTI-MALFUNCTION CIRCUIT

Full safety system reduces external disturbances due to temperature fluctuation, air flow, illumination etc.

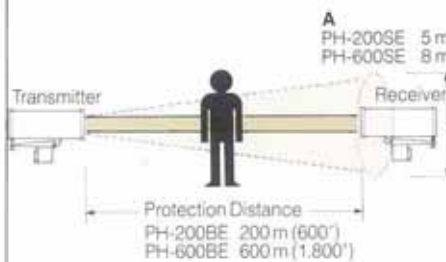
● POWERFUL BEAM FOR OUTDOOR PROTECTION

Modulated pulsed high power LED yields a tolerance level of 10 times (maximum arrival distance against protection distance) for operation in worst of weather conditions.

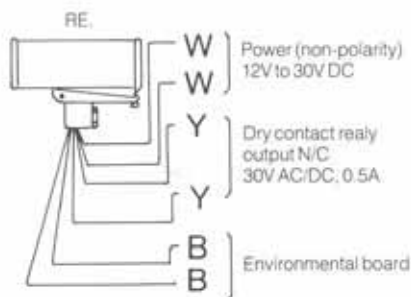
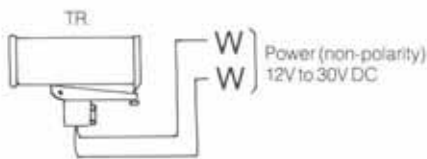
● QUICK BEAM ALIGNMENT

Built-in viewfinder assures quick and precise beam alignment, especially when used with optional EL-01 Sensitivity Level Checker. PH-600SE is equipped with rifle

PROTECTION PATTERN



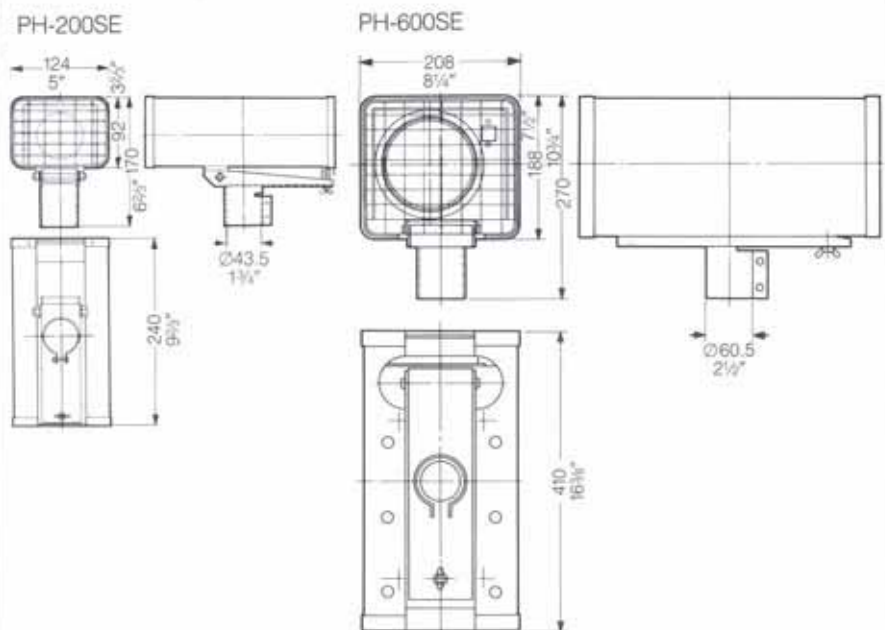
WIRING



OPTIONS

- S.E.C. Environmental Board plugs into Receiver and monitors environmental condition. When bad weather causes the receiver signal level to drop too low, it provides an environmental trouble signal (normally open contact 1a).
- EL-01 Sensitivity Level Checker plugs into monitor jack on Receiver to aid in alignment of beams

PHYSICAL DIMENSIONS



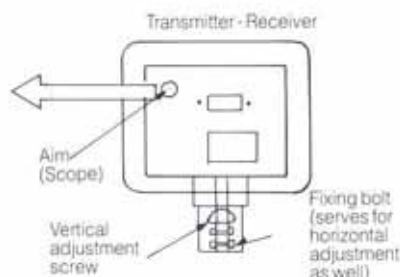
SPECIFICATIONS

	PH-200SE	PH-600SE
Operating Distance (Max Installation Distance)	600' (200 m)	1,800' (600 m)
Max Arrival Distance of Beam (Beam Strength)	6,600' (2000 m)	19,800' (6,000 m)
Light Source	Infrared Light Emitting Diode (LED) Wavelength 8900 Å	
Infrared Beam	Modulated frequency 500 Hz	
Response Time	50 to 100 m/sec	20 to 50 m/sec
Alarm Signal	N/C relay contact (SPST) opens on alarm 2 second reset time Contact rating 30V (AC/DC) 0.5A	
Supply Voltage	12V - 30V DC (non-polarity)	
Power Consumption	45 mA (at 12V DC) total per set	
Temperature Range	-30°F to +122°F (-35°C to +50°C)	
Weight	4.4 lb (2 kg) each unit	17.6 lb (8 kg) each unit
External Dimensions (WxHxL)	5" x 3 3/8" x 9 1/2"	8 1/4" x 7 1/2" x 16 3/8"

How to aim



Adjust the aim so that the transmitter or receiver becomes visible.



DISTRIBUTED BY:

In the U.S.
PULNiX America, Inc.
770-A Lucerne Drive
Sunnyvale, CA 94086
Tel: 408-733-1560; Tlx: 172541
Toll Free outside California (800) 445-5444

In the U.K.
PULNiX America, Inc.
Unit 5, Intec 2, Wade Road
Basingstoke, Hants, RG24 0NE
Tel: 0256-475555; Tlx: 859532

In Germany
PULNiX America, Inc.
Industriestrasse 3
D8755-Alzenau, W. Germany
Tel: 6023-4666; Fax 6023-4667

In Japan
Takenaka Engineering Co. Ltd.
60-1, Obayashi-Cho
Kitkazan, Yamashina
Kyoto 607, Japan
Tel: 075-594-7211; Tlx: 5423-244