

PHOTOELECTRIC BEAM SENSOR

PB-10NSa N/O contact : 33ft. (10m)

PB-10NSb N/C contact : 33ft. (10m)



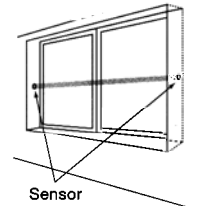
MINIATURIZED PHOTOELECTRIC BEAM SENSOR ENABLED 33ft. LONG DISTANCE DETECTION!

DESCRIPTION

MINIATURIZED PHOTOELECTRIC BEAM SENSOR PB-10NSa/PB-10NSb is designed to cover 33'(10m) distance and is usable in wide applications inconspicuously. (for CD/ATM machine, motor-driven shutter, window or alley.)



For CD/ATM machine



For Window

MINIATURIZED CONTROL BOX

W:1.77"(45mm)xH:3.70"(94mm)xD:1.14"(29mm) succeeded in reducing volume by 40% compared with our current amplifier. No need to take much space for installation.

SENSOR CORD CAN BE CUT FREELY

Both of transmitter cord and receiver cord can be cut as the installation site requires. No need to bundle the extra cord. (Cord:33ft. (10m) Max.)

EAZY INSTALLATION

For sensor head, make a preliminary hole 0.47" (φ12mm) and push it only to be installed. The diameter of ring cover was enlarged up to 0.59" (φ15mm) for easy installation.

BUILT-IN SENSITIVITY VOLUME

Adjustable to the optimal sensitivity as the installation site demands.

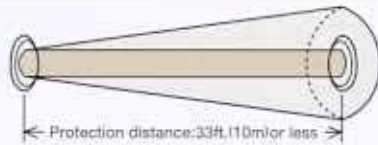
TWO MODELS AVAILABLE

N/O CONTACT(PB-10NSa)or
N/C CONTACT(PB-10NSb)is
available to meet various needs.

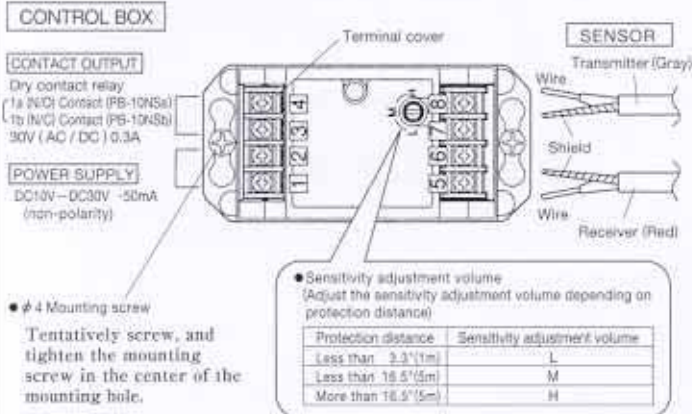
FEATURES

- *High prevention against external light
- *Operation LED(Lights red at detection)

■ COVERAGE



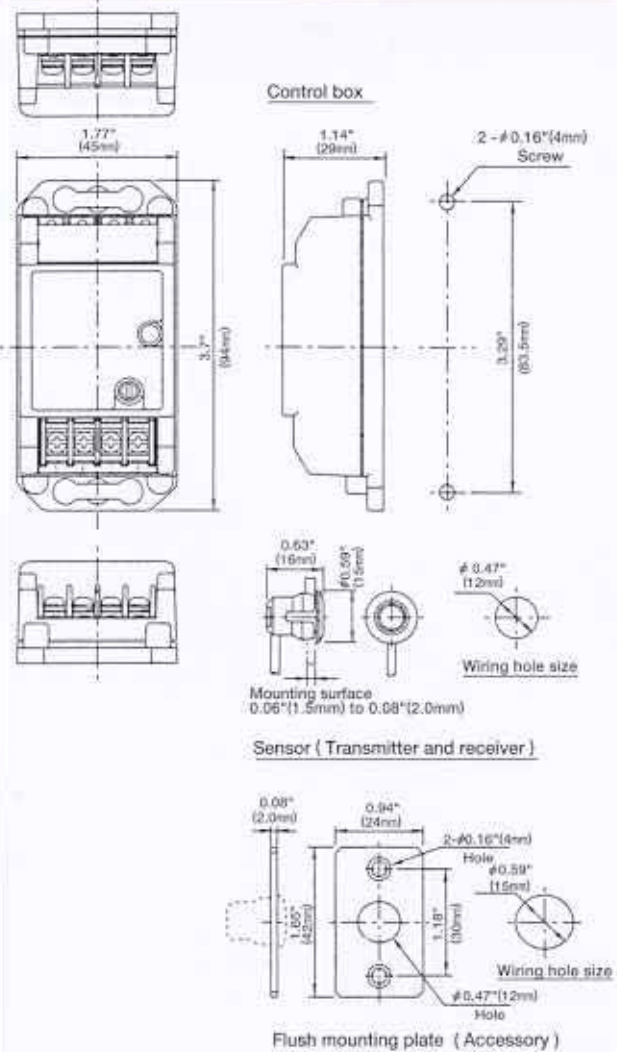
■ TERMINAL ARRANGEMENT



■ SPECIFICATIONS

Model	PHOTOELECTRIC BEAM SENSOR	
	PB-10NSa (N/O contact)	PB-10NSb (N/C contact)
Detection system	Near infrared beam	
Detection distance	33ft. (10m)	
Supply voltage	DC10V to DC30V (non-polarity)	
Current consumption	50mA or less	
Alarm output	Dry contact relay : 30V (AC/DC) 0.3A Contact action : Interruption time + Delay time (approx. 1 sec.)	
	1a contact (N/O)	1b contact (N/C)
Response time	Detect 100msec. or more of beam interruption.	
Operation LED	Lights Red when detection (beam is interrupted)	
Ambient temperature range	-13°F ~ +131°F (-25°C ~ +55°C) (without condensation or frozen)	
Wiring	Terminals	
Appearance	Sensor	: PC resin (clear)
	Control box	: ABS resin (white)
	Flush mount plate	: SUS304 (accessory)
Weight	Sensor	: 3.5oz (100g) × 2 (includes wire)
	Control box	: 2.5oz (70g)
Accessory	φ 4 mounting screw	× 2
	φ 3 mounting screw	× 4 (for flush mounting plate)
	Flush mounting plate	× 2 (for 2 sensors)

■ EXTERNAL DIMENSIONS



■ ACCESSORY



Please note : This sensor is designed to detect intrusion and to initiate an alarm; it is not a burglary-preventing device. PULNIX is not responsible for damage, injury or losses caused by accident, theft, Acts of God (including inductive surge by lightning), abuse, misuse, abnormal usage, faulty installation or improper maintenance.