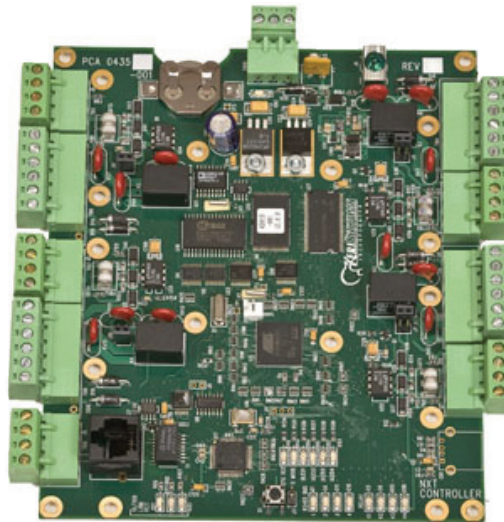




NXT - 4D

NetXtreme 4 Door TCP/IP Controller

- 4 - Door Controller for Keri's *Doors NetXtreme* product line
- On-board TCP/IP connectivity - no network adapters required
- Ethernet (TCP/IP) network architecture between controllers (true peer-to-peer) and to Host Server
- Utilize existing LAN/WAN/Ethernet or pull your own dedicated CAT-5/6 Network
- Embedded MAC Address for one button AutoConfiguration
- Standard 4 Pin Block and RJ-45 Jack built-in for network connection
- Re-assignable Inputs and Outputs
- Quick Disconnect Connectors
- Flash Memory for easy firmware upgrades
- 50,000 Cardholders, 10,000 Selectable Event Buffer
- Locking Metal Enclosure (optional without)
- 128 Bit Encryption



The *NXT-4D Xtreme 4 Door Controller* is built for today's IT environments. With Ethernet functionality built directly into the controller. Keri's proprietary MAC addressing scheme allows for reliable hardware discovery and true 1 button autoconfiguration. Networking between *NXT-4D* controllers and/or its sister *NXT-2D NetXtreme 2 Door Controller* also utilize peer-to-peer standards. The *NXT-4D* is designed to be extremely intelligent with little reliance on network traffic for decision making, allowing it to be extremely thrifty with any network's valuable bandwidth.

To expand the system's capabilities, up to four companion 4x4 Input/Output boards (*NXT-4x4*) can be added - one to each of the controller's RS-485 trunks (busses). Customers can choose between Keri's new line of highly secure, 4-wire *NXT Series Proximity Readers* with reader supervision, or any reader with a standard Wiegand output or Keri's *MS Series Proximity Readers* via the *NXT-RM3 Reader Interface Module*. To manage the system, *Doors NetXtreme* software has much of the same look and feel as Keri's acclaimed original *Doors™* software, but with the added functionality of a Client/Server architecture.



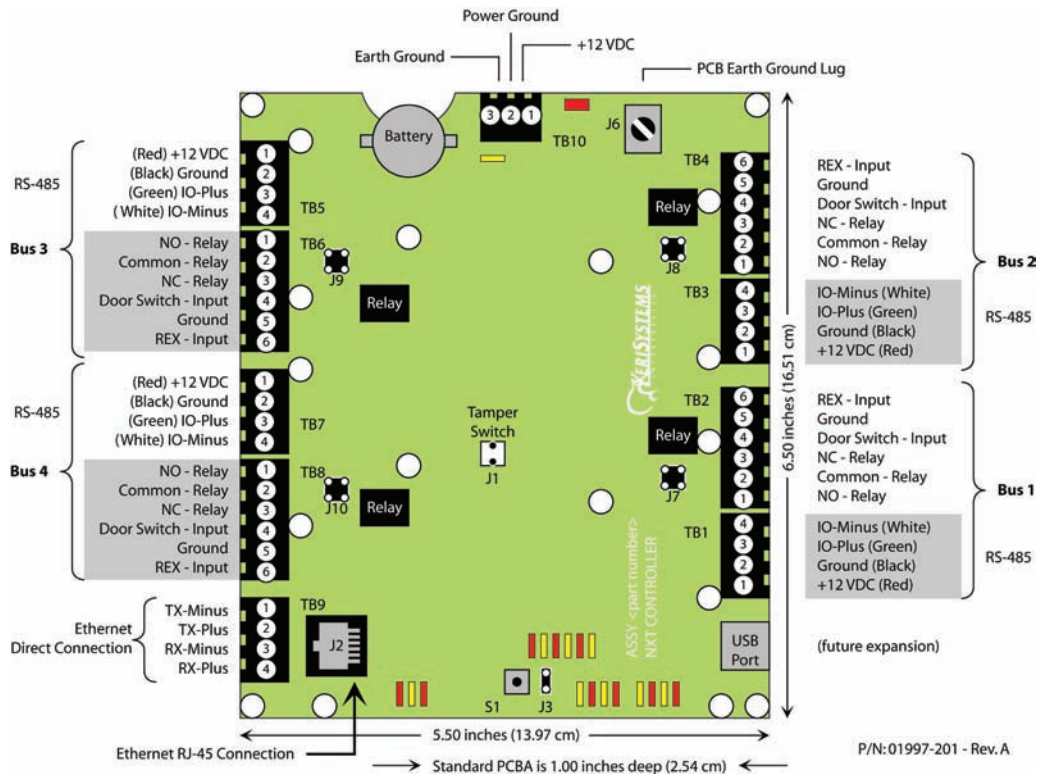
2305 Bering Drive • San Jose, California 95131
408-435-8400 • Toll Free: 800-260-5265 • Fax: 408-577-1792

e-mail: sales@kerisys.com

web: www.kerisys.com

NXT - 4D

NetXtreme 4 Door TCP/IP Controller



SPECIFICATIONS:

Size (Enclosure)

13.125" H x 10.625" W x 3.06" D
(33.34 cm x 26.99 cm x 7.77 cm)

Size (PC Board)

5.6" H x 6.6" W x 2.55" D
(14.28 cm x 16.83 cm x 2.55 cm)

Weight (In Enclosure)

5.00 Lbs (2.27 Kgs)

Input Voltage

+ 12 VDC nom. (10 - 14 VDC)

Current Draw

650 mA typical

Inputs (8, reassignable)

Door Contact Switch (4)
Request to Exit (4)
Expandable up to 24 Inputs

Outputs (4, reassignable)

1.0 amp (24 VDC max.) dry circuit
Expandable up to 20 Outputs

Buffer Capacity

50,000 Cardholders
10,000 Events

Temperature / Humidity

-40° F to 140° F
(-40° C to 60° C)
0-90% Non Condensing

Communication

To Server: TCP/IP 10/100 bus
Between Controllers: TCP/IP 10/100 bus

Lithium Battery

5 years Memory Retention



Presented By:

